



72k FACE SERUM WOMEN CLINICAL STUDY RESULTS



QUESTIONNAIRE* cosmetic efficacy & quality results confirmed by study participants

| cosmetic effect reported by study participants (n=24) | % |
|--------------------------------------------------------------|------|
| tightens & firms skin | 88 % |
| improves skin texture & tone | 88 % |
| refines pores | 88 % |
| improves radiance | 83 % |
| soothes (calms) the skin | 79 % |
| regenerates the skin | 79 % |

| cosmetic quality confirmed by study participants (n=24) | % |
|----------------------------------------------------------------|------|
| product well absorbed | 96 % |
| scent is pleasant | 96 % |

* all results statistically significant; application twice daily for a duration of 2 months (56 days); treatment response assessed at day 56 by self-assessment questionnaire; n=24; 28 participants recruited; 4 dropouts



72k FACE & EYE SERUM WOMEN CLINICAL STUDY RESULTS



INSTRUMENTAL MEASUREMENTS*

| efficacy 72k eye and face serum women | responder % of study persons | best result improvement vs. baseline (case nr) | average improvement from baseline % (n) | measurement method |
|----------------------------------------------------------------------------|---------------------------------|------------------------------------------------------|-----------------------------------------------|-------------------------------------------|
| increase of skin firmness eye and face serum | 85 % (17/20) | 77 % (nr. 25) | 25.4 % | Cutometer MPA 580 |
| reduction of crow's feet depth eye serum | 67 % (12/18) | 53 % (nr. 02) | 9.0 % | EvaFace 5S / 3D |
| increase of skin density/redensified skin face serum | 80 % (16/20) | 32 % (nr. 26) | 13.9 % | DermaScan C |
| decrease of skin sagging volume face serum | 74 % (14/19) | 79 % (nr. 14) | 8.4 % | EvaFace 5S / 3D |
| decrease of nasogenial fold depth face serum | 68 % (13/19) | 38 % (nr. 6) | 11.3 % | EvaFace 5S / 3D |
| decrease of glabella fold depth face serum | 58 % (11/19) | 45 % (nr. 6) | 9.3 % | EvaFace 5S / 3D |
| reduction of skin pollution anti-pollution effect face serum | 95 % (19/20) | - | 26.6 % | Carbon Black Test & Dino Lite pictures |
| statistically significant lightening of spots | 95 % (19/20) | - | 6.3 % | Spectrophotometer CM-700d |
| statistically significant lightening of spot free skin face serum | 90 % (18/20) | - | 3.7 % | Spectrophotometer CM-700d |

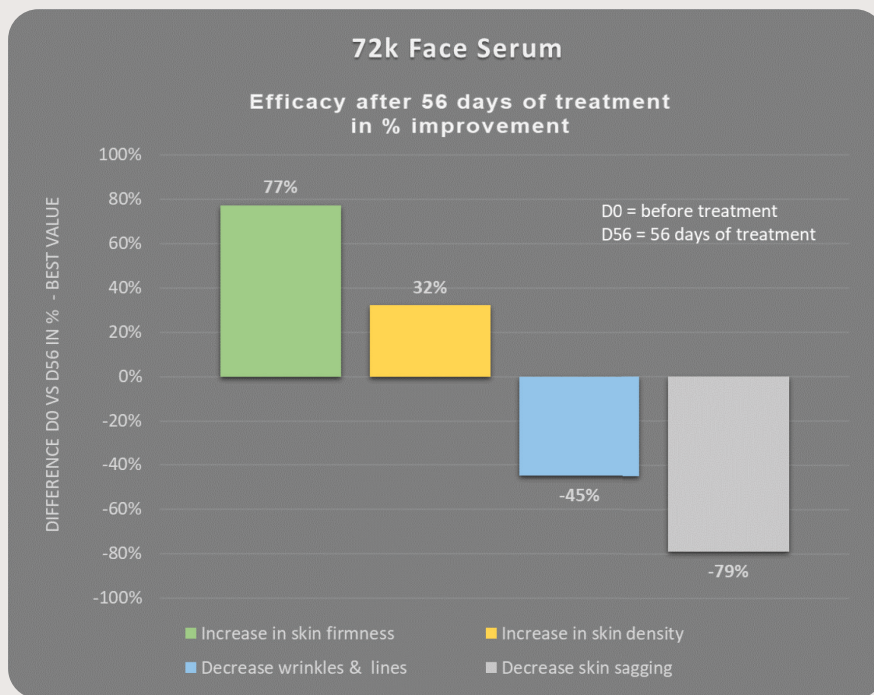
* all results statistically significant; application twice daily for a duration of 2 months (56 days); treatment response assessed at day 28 and day 56 by instrumental measurement; n=18-20; 28 participants recruited; 4-10 drop outs instrumental measurement; n=18-20; 28 participants recruited; 4-10 drop outs



72k FACE SERUM WOMEN CLINICAL STUDY RESULTS



INSTRUMENTAL MEASUREMENT – BEST RESULT



measurement methods

- Firmness
Cutometer
- Density
DermaScan C
- Reduction of wrinkles & sagging
sagging skin
- EvaFace 5S / 3D

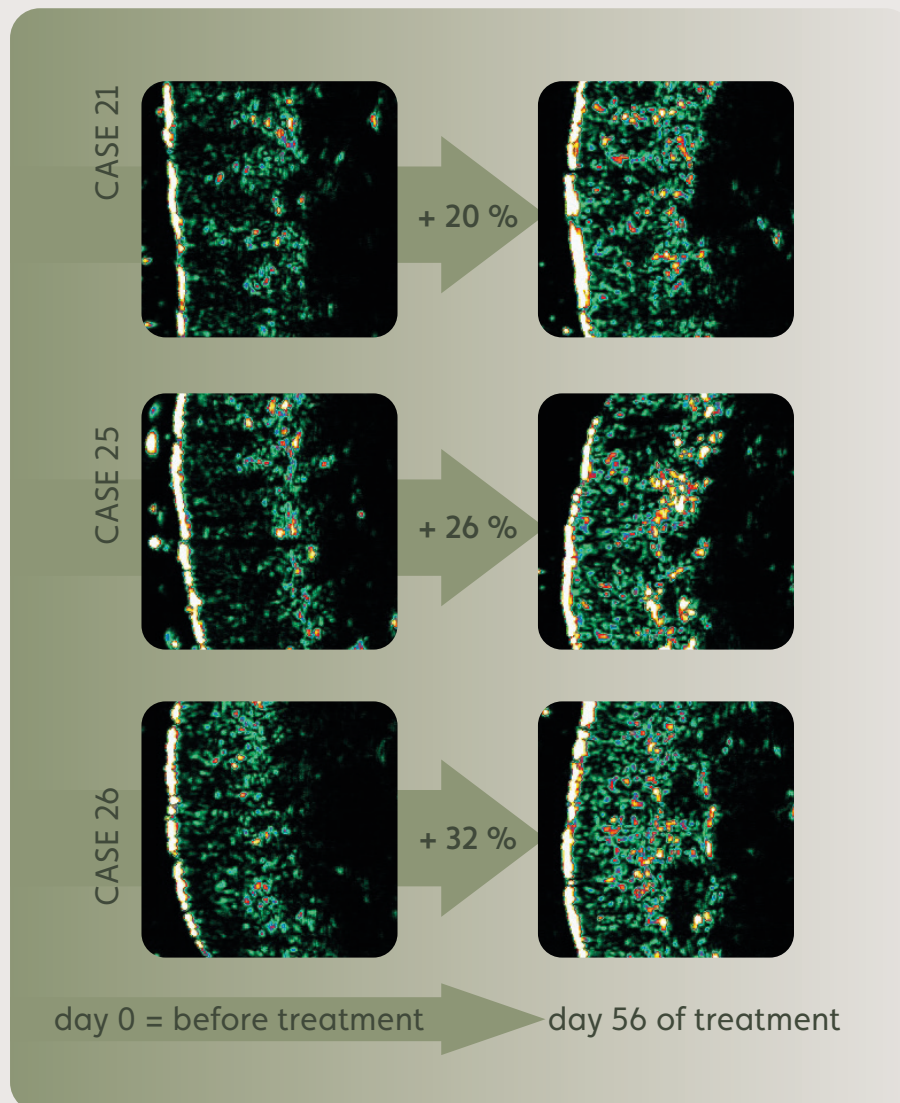
outstanding improvement of skin firmness & density and significant reduction of wrinkles and volume of skin sagging



72k FACE SERUM WOMEN CLINICAL STUDY RESULTS



SIGNIFICANT INCREASE OF SKIN DENSITY Dermascan C Ultrasound Images



impressive re-densified skin clear and significant increase of skin density (%) and thickness suggesting regeneration of skin matrix.



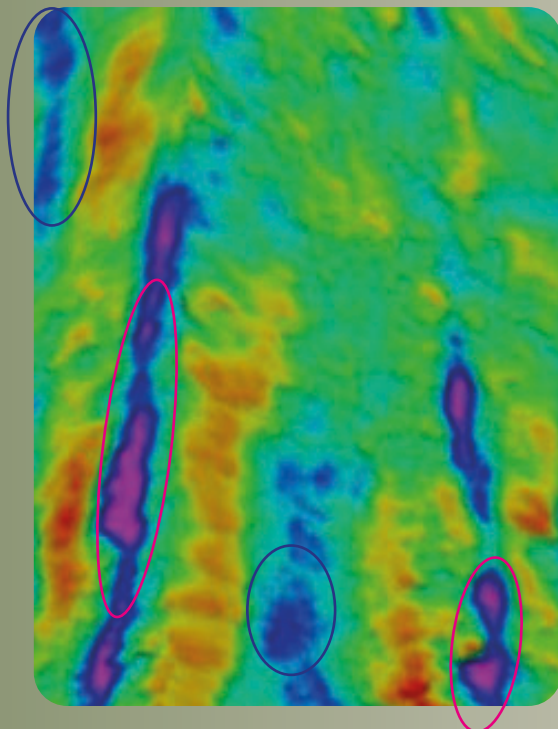
72k FACE SERUM WOMEN CLINICAL STUDY RESULTS



WRINKLE REDUCTION IN DEPTH AND LENGTH

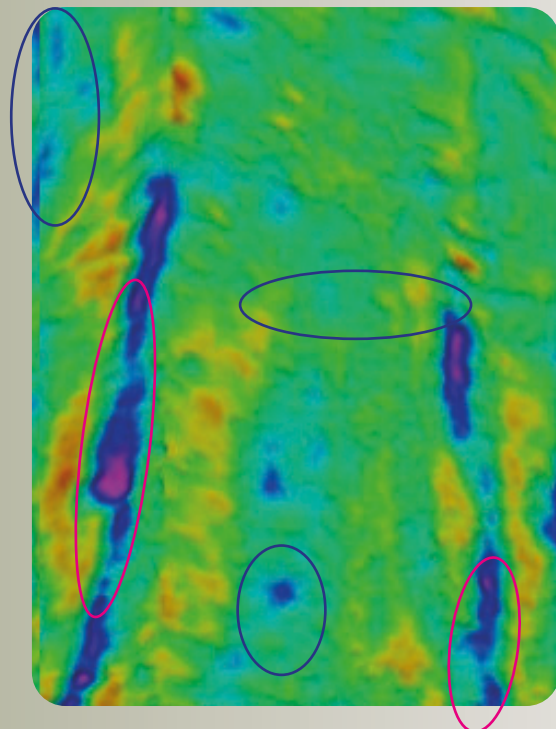
example of clearly visible glabella fold improvement
decrease in depth and size (case 12)

EvaFace S5; 3D Profilometry



day 0 = before treatment

decrease of pink and blue surfaces indicate re-plumping and reduction of wrinkles



day 56 of treatment

intensively re-plumped, tightened glabella area (less pink, blue and yellow areas); wrinkles/lines disappeared or smothered

- deep wrinkles
- wrinkles
- plumped area
- filled area



72k FACE SERUM WOMEN CLINICAL STUDY RESULTS



SKIN LIFTING & CORRECTION OF WRINKLES spectrophotometric images

CASE 26



day 0 = before treatment



day 56 of treatment

significant skin smoothing
reduction of sagging skin & wrinkles
(depth and length) case 26



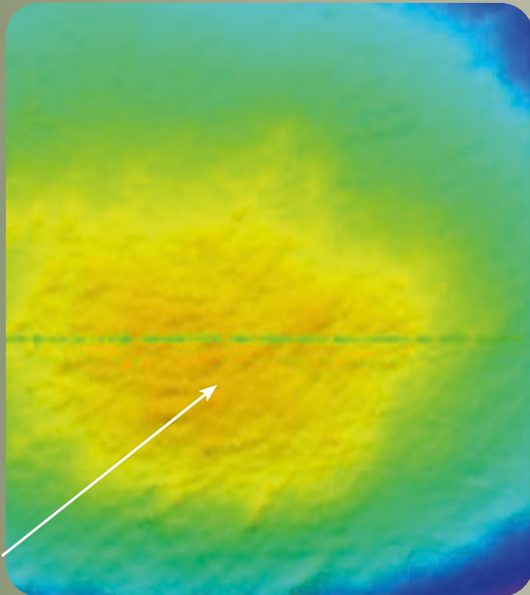
72k FACE SERUM WOMEN CLINICAL STUDY RESULTS



IMPROVEMENT OF SKIN SAGGING

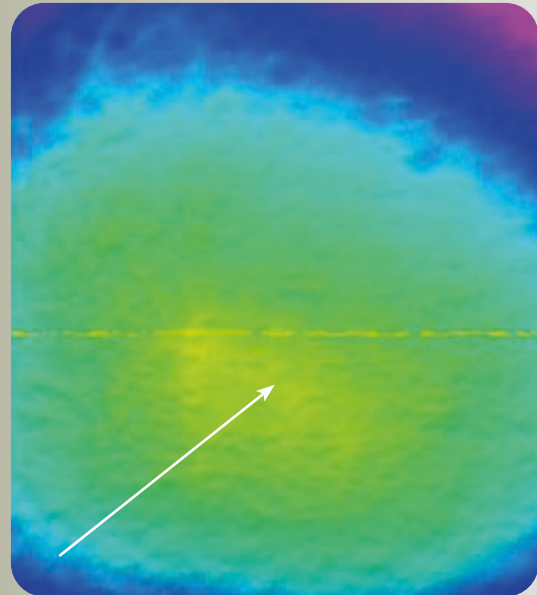
decrease of skin sagging
example of clear reduction of sagging skin (case 6)

EvaFace S5; 3D Profilometry



day 0 = before treatment

decrease of yellow surface indicates a decrease of skin sagging and increase of skin tightness



day 56 of treatment

intensively tightened, firmed skin area with significantly less sagging skin



72k FACE SERUM WOMEN CLINICAL STUDY RESULTS



SKIN BRIGHTENING spectrophotometric images

CASE 2 – asian skin



day 0 = before treatment



day 56 of treatment

CASE 10 – caucasian skin



day 0 = before treatment



day 56 of treatment

visible skin brightening
examples of statistically significant lightening
of spots and spot free skin areas